

FIFTEENTH REPORT

of the

PENNSYLVANIA ORNITHOLOGICAL RECORDS COMMITTEE

May 2008

Nick Pulcinella, PORC Secretary, for the Committee

The Pennsylvania Ornithological Records Committee (hereafter PORC or the Committee) evaluates documentation it receives of any record of a species or recognizable form that is on the Review List for Pennsylvania. In addition it reviews documentation to new species or new subspecies for the state. This report covers 143 records of 66 species. The 131 records accepted, of 61 species, represent an acceptance rate of 92%.

Highlights include the first records for Long-billed Curlew, Fork-tailed Flycatcher and Redwing; third and fourth records for Black-bellied Whistling-Duck; third through sixth records for California Gull; fourth records for American Oystercatcher and Long-tailed Jaeger; first record for "Lesser" Sandhill Crane. The Committee, at its annual meeting in July 2007, also agreed to accept Trumpeter Swan to the state list based on the fact that the species is a regular annual visitor and that states (except for NY) that have re-introduction programs accept the species as established. The addition of the four new records brings the state total to 408 species (Pulcinella 2006).

The Committee received reports from 36 counties. The top five counties reporting were Bucks (28), Erie (25), Lancaster (16), Northampton (8), and Berks (5). The Committee encourages observers to document their sightings with photographs, videos or sound recordings when possible. The advent of digital photography has greatly increased the number of definitive photographs the Committee receives. Unfortunately, these very sharp, clear images are not always accompanied by written documentation. The Committee emphasizes that the primary point of any documentation of a rare bird should be a detailed written description. Supporting written documentation may add details such as missing field marks or behavior notes.

For tips and guidelines on documenting rare birds, observers are encouraged to consult the Committee's web pages at <http://www.pabirds.org>, Dittman and Lasley 1992, and PORC 2000.

Documentation can be submitted to Nick Pulcinella, PORC Secretary, 613 Howard Road, West Chester, PA 19380, nickpulcinella@verizon.net.

Committee News

The Committee membership during this report period consisted of Eric Witmer (chair), Al Guarente, Jonathan Heller, Tom Johnson, Geoff Malosh, Jerry Stanley and Rick Wiltraut. Nick Pulcinella is the non-voting secretary. Recent members who voted on some records in this report include George Armistead, Paul Guris and Dan Heathcote. During 2007 Stanley's term ended and Ben Coulter was elected as a voting member.

Since the last Committee report in September 2006, several changes were made to the Review List. Removed from the list were: *Great Cormorant*, *Cattle Egret*, *Yellow-crowned Night-Heron*, *Glossy Ibis*, *Whimbrel*, *Hudsonian*

Godwit, *Marbled Godwit*, *Purple Sandpiper*, *Pomarine Jaeger*, *Parasitic Jaeger*, *Franklin's Gull*, *Little Gull*, *Eurasian Collared-Dove*, *Sedge Wren*, *Blue Grosbeak* and *Yellow-headed Blackbird*. The adult-only exemption for *Thayer's Gull* was removed; PORC will review all Thayer's Gull reports. Specific county exemptions noted with the Review List were also removed.



Plate 1. Pennsylvania Ornithological Records Committee 22 July 2007. Left to right: Nick Pulcinella, Jonathan Heller, Al Guarente, Tom Johnson, Geoff Malosh and Eric Witmer (not pictured Jerry Stanley and Rick Wiltraut).

Also at the July 2007 PORC meeting, the Committee decided to tackle the problem of acceptance of Barnacle Goose records. Discussion revolved around whether the occurrence of this species in Pennsylvania is the result of wild birds or those released or escaped from captivity. Most reports of Barnacle Geese in Pennsylvania occur during the expected migration periods for waterfowl, and the species is often seen associating with species which occur within the Barnacle Goose breeding range (e.g., Greater White-fronted Goose). It was decided to re-review each Barnacle Goose report and make decision on acceptance on a case-by-case basis.

The Committee has a presence on the Pennsylvania Society for Ornithology web site <www.pabirds.org> where PORC's pages include the Official State List, the Review List of species requiring documentation, tips for improving documentation of rarities, and a documentation form that can be downloaded. The site also contains information about the functions of the Committee.

Classification of Records

Class I: An accepted record based on an existing identifiable specimen, a diagnostic photograph or a diagnostic recording. Suffixes appended to Class I records are (p) photograph, (r) sound recording, (a) audiotape, (v) videotape, (s) specimen.

Class II: An accepted sight record documented independently by two or more observers.

Class III: An accepted sight record documented by one observer.

The Official State List must meet Class I, II, or III to be listed.

Class IV-A: A record for which there exists a majority of evidence in support of the observer's identification; the record is probably correct, but not beyond reasonable doubt.

Class IV-B: A record for which there exists insufficient evidence for evaluation.

Class IV-C: A record for which there exists a majority of evidence in favor of an identification other than what was submitted.

Class V: The record is correct, but the bird represents an escapee or an introduced species not established in Pennsylvania

Format of this Report

The records are arranged taxonomically following the American Ornithologists' Union Check-list of North American Birds (AOU 1998) and supplements. The number in parentheses after the species name represents the number of accepted records, including those in this report, since the establishment of PORC in 1989. A (+) after the number signifies that there are accepted records prior to the formation of PORC. Each accepted record includes the locality, county and date(s) when known. In many cases, dates are taken from the seasonal reports published in *Pennsylvania Birds*. Enclosed in parentheses following the date are the initials of the observer(s) responsible for finding and/or identifying the bird, if known, followed by a semicolon, then the names of those who submitted documentation (in alphabetical order). Following the list of observers is the record's classification and the PORC record number. This is followed by the Committee's vote tally for each record. All photographs, video and sound recordings are currently being held with the Secretary until a permanent location is established. An (*) after a species name indicates that the species is no longer on the PORC review list.

Abbreviations: CBC = Christmas Bird Count, et al. = and others, m.obs. = multiple observers Mt = Mountain, NAB = North American Birds, NWR = National Wildlife Refuge, PB = Pennsylvania Birds, Res. = Reservoir, Rd. = Road, SGL = State Game Lands, S. P. State Park, Twp. = Township, WMA = Wildlife Management Area.

ACCEPTED RECORDS

Black-bellied Whistling-Duck (*Dendrocygna autumnalis*) (4)

Four at a small farm pond near Pleasantville, *Berks*, 4-18 June 2006. (PO, RK; TA (p), PF, TJ (p), GM (p), NP, m.obs.; Class I; 102-01-2006). 7/0. Photograph published in PB V20:143 and NAB V60:594. One at the Alcoa Marsh, *Lancaster*, 24 June – 6 July 2006. (LS; TJ (p), m.obs.; Class I; 102-02-2006). 6/0. These reports were part of an incursion of this species into the northeast and Midwest during Spring/Summer 2006.

Greater White-fronted Goose (*Anser albifrons*) (6+)*

One at Neville Island, *Allegheny*, 18 February - 4 March 2005. (GM (p), MV, et al.; Class I; 110-01-2005). 6/0. Photograph published in PB V19: 55 and NAB V59:261. PORC will no longer review any reports after 2005.

Green-winged (Eurasian) Teal (*Anas crecca crecca*) (6+)

One male at the Alcoa Marsh, *Lancaster*, 24 January – 6 February 2006. (LC; TA (p), TJ (p); Class I; 119a-01-2006). 7/0. Photograph published in PB V20:39. This race of the Green-winged Teal is probably a regular but rare spring migrant in the state and probably overlooked because of its similarity to Green-winged Teal. In Europe, Eurasian or Common Teal is considered a separate species from Green-winged Teal.



Plate 2. Black-bellied Whistling-Duck (*Dendrocygna autumnalis*). This bird at Pleasantville, *Berks*, 12 June 2006 (*Tom Amico*) was one of two records of this species for 2006 and part of a moderate movement of birds north and west from their southern breeding grounds.

Eurasian Wigeon (*Anas penelope*) (19+)*

One male on the West Branch of the Susquehanna River in Wayne Twp., *Clinton*, 13 March 2005. (CH, ChH; Class III; 135-01-2005). 6/0. One male at Beaver Run Res., *Westmoreland*, 25 March 2005. (DB, KB; Class III; 135-03-2005). 7/0. Another male at Lake Arthur, *Butler*, 29 October - 4 November 2005. (PH, et al; Class III; 135-02-2005). 6/0. This species continues to be annual especially in spring with multiple records each year across the state. PORC will no longer review reports of this species after 2005.

King Eider (*Somateria spectabilis*) (7+)

One immature male seen in flight as it passed Presque Isle S.P., *Erie*, 23 December 2006. (JMW; Class III; 145-01-2006). 7/0. All but two of the accepted records have been from Presque Isle Stet Park.

Harlequin Duck (*Histrionicus histrionicus*) (11+)

A male and female were at Presque Isle S.P., *Erie*, 16 December 2005. (JMW (p); Class I; 149-01-2005). 6/0. Photograph published in PB V20:39 and NAB V60:229. This pair flew in and landed along the shoreline while McWilliams was doing a waterbird count. The male was described as a first winter bird.

Northern Gannet (*Morus bassanus*) (4+)

One first-year bird at Presque Isle S.P., *Erie*, 26 November 2005. (BC (p); Class I; 065-01-2005). 6/0. Another first year

in Ashland, *Schuylkill*, 19 October 2005. (Hawk Mt. Staff; Class I; 065-02-2005). 6/0. The *Schuylkill* bird was found dead on a highway and delivered to Hawk Mt. The specimen was view by the Committee during its meeting at the Hawk Mt. Acopian Center 7 December 2005.



Plate 3. Northern Gannet (*Morus bassanus*). This first year bird was found dead along a highway in *Schuylkill*, 19 October 2005. The committee viewed the specimen during its 2005 meeting at the Acopian Center for Conservation Learning at Hawk Mountain Sanctuary (*Nick Pulcinella*).

Anhinga (*Anhinga anhinga*) (6)

One female seen soaring over the Buckingham Hawk Watch near Forest Grove Rd, *Bucks*, 19 September 2005. (MH, KM, LM, et al; Class II; 074-01-2005). 7/0. This is the first accepted fall record. One female at Exton, *Chester*, 4 May 2006. (CCh; NP (p); 074-01-2006). 7/0. Photograph published in PB V 20:64. The *Chester* report is the first photographed in the state. (Chalfant 2006).



Plate 4. Anhinga (*Anhinga anhinga*). This female was present briefly at Exton, *Chester*, 4 May 2006 (*Nick Pulcinella*).

Cattle Egret (*Bulbulcis ibis*) (9+)*

One at Miller's Pond, *Crawford* 12-13 November 2005. (GM (p), et al; Class I; 089-01-2005). One in Tullytown, *Bucks*, 13 April 2006. (HE (p); Class I; 089-01-2006). 7/0. Photograph published in PB V20:79. One at Maple Knoll Farms, *Bucks*, 6 November 2006. (RS, VS (p); Class I; 089-03-2006). 6/0. Photograph published in PB V20:201. The Maple Knoll

Farms bird was also unusual for its late date. PORC will no longer review reports after 2006.

Yellow-crowned Night Heron (*Nyctanassa violacea*) (5+)*

An adult at Kiwanis Park, *York*, 9 July 2005. (GM (p); Class I; 092-01-2005). 6/0. Photograph published in PB V19(3) cover and NAB V59:592. One immature at Peace Valley Park, *Bucks*, 1-12 September 2005. (AM; HE (p), et al.; Class I; 092-03-2005). 6/1. Photograph published in PB V19:218. Another immature at Blue Marsh Lake, *Berks*, 3 September 2005. (JS (p); Class I; 092-02-2005). 6/0. Photograph published in PB V19: 218. One adult in Perkasio, *Bucks*, 3 May 2006. (MBP (p); Class I; 092-01-2006). 7/0. Photograph published in PB V20:79. The Kiwanis Park bird is part of a small nesting colony there. PORC will no longer review reports after 2006.

Glossy Ibis (*Plegadis falcinellus*) (15+)*

One adult in Fayetteville, *Franklin*, 8-11 April 2005. (CG, DG (p), BK, RR (p), et al; Class I; 095-01-2005). 6/0. Photograph published in PB V19:124. This species continues to be annual in Pennsylvania. PORC will no longer review reports after 2006.

Plegadis, sp. (*Plegadis species*) (7+)*

One immature at the Penn-Warner Club, *Bucks*, 20 July 2006. (CR (p); AM; Class I; 095a-01-2006). 7/0. Photograph published in PB V20:144. Two observed in flight at Peace Valley Park, *Bucks*, 27 September 2006. (KR; Class III; 095-02-2006). 6/1. The July photo shows an immature dark ibis most likely a Glossy but White-faced Ibis, a species not yet recorded in Pennsylvania, could not be completely ruled out. PORC will no longer review reports after 2006.

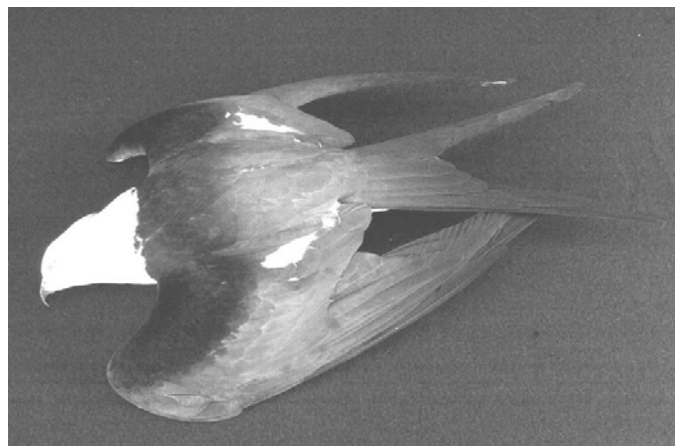


Plate 5. Swallow-tailed Kite (*Elanoides forficatus*). This bird was found moribund in a field near Octoraro Creek, *Lancaster*, 13 March 2005 (*Tom Amico*). The bird succumbed and is now in the display collection at Middle Creek WMA.

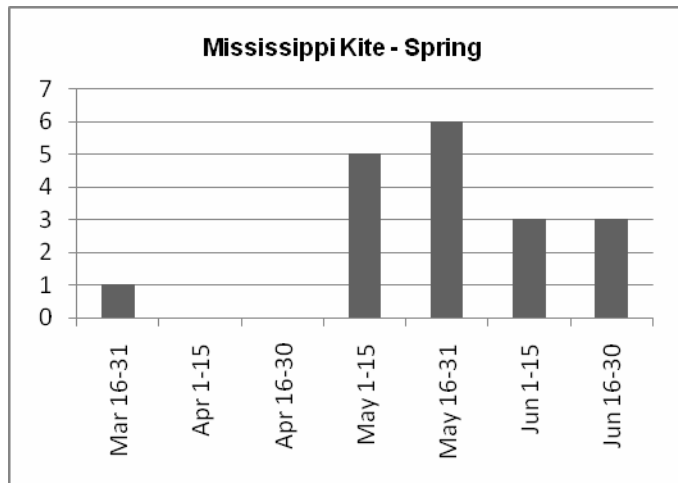
Swallow-tailed Kite (*Elanoides forficatus*) (8+)

One near Octoraro Creek, *Lancaster*, 13 March 2005. (CP; TA, BS; Class I; 168-01-2005). 6/0. Photograph published in PB V19:124 and NAB V59:430. One observed in flight near Sugar Bay, *McKean*, 31 August 2005. (JF; Class III; 168-02-2005). 7/0. Price found the *Lancaster* bird moribund in a field. The bird succumbed and was given to Schutsky who in turn delivered the carcass to the staff at Middle Creek WMA. The staff was able to have the skin prepared as a display specimen, which is now in the collection at Middle

Creek WMA. The *McKean* bird was observed briefly as it flew just above the treetops.

Mississippi Kite (*Ictinia mississippiensis*) (17+)

An adult female observed during the Pennsylvania Migration Count at Nockamixon S.P., *Bucks*, 14 May 2005. (BE; Class III; 171-01-2005). 6/0. One sub-adult observed in flight with Broad-winged Hawks over Hawk Mountain, *Berks*, 11 September 2006. (AK, KM, LM, SS; Class II; 171-02-2006). 7/0.



Broad-winged Hawk (*Buteo platypterus*) (3+)*

One immature at Beltzville S.P., *Carbon*, 10-15 January 2005. (RRh (p); Class I; 184-01-2005). 6/0. Photograph published in PB V19:56 and NAB V59:261. Extremely rare in winter in North America outside of south FL, the series of photographs eliminates the similar Red-shouldered Hawk. PORC will no longer review winter reports of this species after 2006.

Yellow Rail (*Coturnicops noveboracensis*) (4+)

One at Pine Run, *Bucks*, 31 October – 7 November 2006. (AM; DF (p), KR, et al.; Class I; 231-01-2006). 6/0. Photograph published in PB V20:201 and NAB V61:64. This species is probably a regular, rare fall migrant through the state. Because of its small size and secretive behavior, it can be frustratingly difficult to locate. This bird was photographed at night with the aid of a spotlight.



Plate 6. Yellow Rail (*Coturnicops noveboracensis*). Present at Pine Run, *Bucks*, 31 October-7 November 2006 it was photographed here at night with the aid of a spotlight (*Devich Farbotnik*).

Purple Gallinule (*Porphyula martinica*) (3+)

One immature near Macungie, *Lehigh*, 1-14 October 2006. (LLe; TJ (p), GM (p), BMo (p), CR (p), m.obs.; Class I; 242-01-2006). 6/0. Photograph published in PB V20:174-175 and NAB V61:180. Levengood who was doing some casual birding at the pond “to see if anything was around” discovered this bird at a housing development retention pond. During its stay the bird proved very cooperative allowing leisurely study and excellent photographs.



Plate 7. Purple Gallinule (*Porphyula martinica*). This immature was discovered at a housing development retention pond near Macungie, *Lehigh*, 1 October 2006 and remained there for two weeks. Photographed here 7 October 2006 (*Tom Johnson*).

Sandhill Crane (*Grus canadensis canadensis*) (14+)*

One in Greenfield Twp., *Erie*, 30 December 2005. (JMW (p); Class I; 248-01-2005). 6/1. Photograph published in PB V20:6. The photos submitted clearly show the smaller “Lesser” Sandhill Crane in direct comparison with the larger “Greater” Sandhill Cranes. This is the first documented record of this subspecies. (McWilliams 2006).



Plate 8. “Lesser” Sandhill Crane (*Grus canadensis canadensis*). This bird was photographed in direct comparison with the larger “Greater” Sandhill Crane 30 December 2005 in Greenfield Twp., *Erie* (*Jerry McWilliams*) and was the first documented record of this subspecies.

Piping Plover (*Charadrius melodus*) (13+)

One at the Penn Warner Tract, *Bucks*, 2 April 2005. (DF (p); BE (p), et al; Class I; 261-01-2005). 7/0. One at Presque Isle S.P., *Erie*, 26-28 April 2005. (BC (p); JMW; Class I; 261-02-2005). 7/0. Photograph published in PB V19:124. One at Presque Isle S.P., *Erie*, 10-17 May 2005. (JMW (p); BC; Class I; 261-03-2005). 7/0. Photograph published in PB V19:124 and NAB V59:431. One at Presque Isle S.P., *Erie*, 28 May 2005. (JF; Class III; 261-04-2005). 7/0. The *Bucks* bird was discovered during a drenching wind-blown rain and the first county record since 1876! The three different individuals at PISP was exciting. The 10 May bird possessed a leg band.



Plate 9. Piping Plover (*Charadrius melodus*). This bird at Presque Isle S.P., *Erie*, 10-17 May 2005 (Jerry McWilliams) was one of three reported from this location during Spring 2005. A fourth was recorded from Bucks 2 April 2005.

American Oystercatcher (*Haematopus palliatus*) (4)

One along the Delaware River in Philadelphia, *Philadelphia*, 3 September 2006. (DF (p), JH; NP, et al.; Class I; 266-01-2006). 7/0. Photograph published in PB V20:201 and NAB V61:16. This bird was part of the fallout from Tropical Storm *Ernesto*. It spent most of its time – only a few hours - walking along the piers and docks of the Philadelphia waterfront. It was observed from the Camden New Jersey side where a clear but unobstructed view could be had.

Black-necked Stilt (*Himantopus mexicanus*) (8+)

One was at a farm pond near Maxatawny, *Berks*, 22-23 May 2005. (BW (p); Class I; 268-01-2005). 6/0. One on the Conejohela Flats, Washington Boro, *Lancaster*, 27 May 2006. (TR (p); Class I; 268-01-2006). 7/0. Photograph published in PB V20:80. These sightings fall within the 11-27 May window of previous spring records.

Whimbrel (*Numenius phaeopus*) (6+)

At least six at the Dunnings Creek Wetlands, *Bedford*, 26 May 2004. (TD (p); Class I; 286-02-2004). 5/2, 6/1. One that spent a few hours at Little Blue Lake, *Beaver*, 21 May 2006. (MV; GM (p); Class I; 286-01-2006). 6/0. Photograph published in PB V20:80. Both of these reports fall within the expected late May passage of this species through Pennsylvania. PORC will no longer review reports of this species after 2006.

Long-billed Curlew (*Numenius americanus*) (1)

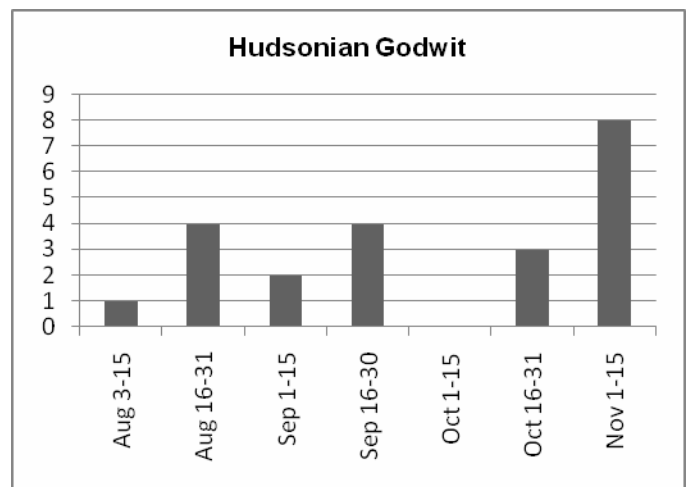
One photographed in flight as it passed Presque Isle S.P., *Erie*, 31 August 2005 following the passing of Hurricane *Katrina*. (JMW (p); Class I; 291-01-2005). 6/0. Photograph published in PB V19:196. The bird was observed as it circled above Gull Point. The long decurved bill, overall buffy color, orange inner primaries and lack of head striping ruled out Whimbrel. This is a first state record. (McWilliams 2005a).



Plate 10. Long-billed Curlew (*Numenius americanus*). A first state record, this bird was photographed as it passed Presque Isle S.P., *Erie*, 31 August 2005 following the passage of Hurricane *Katrina* (Jerry McWilliams).

Hudsonian Godwit (*Limosa haemastica*) (19+)*

Three were photographed at Yellow Creek S.P., *Indiana*, 27 August 2005. (TS (p); et al; Class I; 293-01-2005). 6/0. Photograph published in PB V19:219. One at Codorus S.P., *York*, 9-22 October 2006. (MW; BM (p), CR (p), m.obs.; Class I; 6/0. Photograph published in PB V20:202. The *Indiana* birds were what remained of a flock of 50 that had put down earlier in the day. PORC will no longer review reports after 2006.

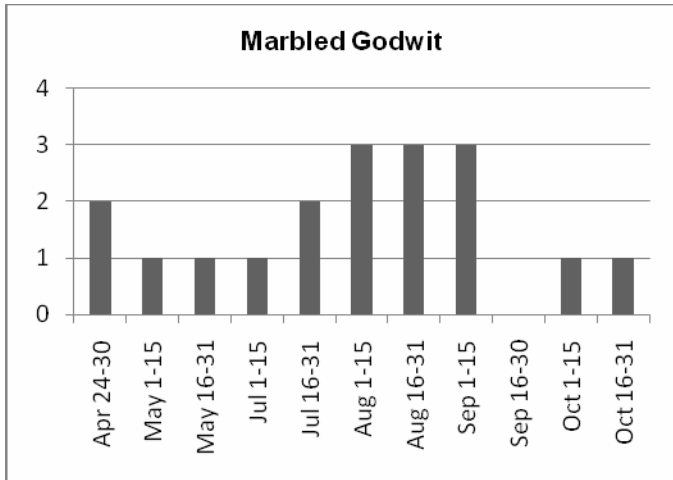


Marbled Godwit (*Limosa fedoa*) (18+)*

One adult at Presque Isle S.P., *Erie*, 28 May 2005. (JF; Class III; 295-01-2005). 6/0. One worn adult at Presque Isle State Park, *Erie*, 18 July 2005. (BC (p); Class I; 295-02-2005). 6/0. One juvenile at Washington Boro, *Lancaster*, 6 August 2005. (TA (p), et al.; Class I; 295-03-2005). 6/0. Photograph published in PB V19:219. Another juvenile at Presque Isle S.P., *Erie*, 27 August 2006. (BC (p); 27 August

2006; Class I; 295-01-2006). 7/0. Photograph published in PB V20:202. PORC will no longer review reports after 2006.

PORC will no longer review this species combination after 2006.



Parasitic Jaeger (*Stercorarius parasiticus*) (13+)*

One sub-adult at Presque Isle S.P., *Erie*, 17 July 2005. (JMW (p); Class I; 333-01-2005) 6/1. Photograph published in PB 19:157 and NAB V59:593. The photographs show well the small, triangular shaped head, small bill with no obvious hook, dark upperwings with no contrast between coverts and secondaries and the heaviest point of the body appears to be below the chest unlike Pomarine and Long-tailed. (McWilliams 2005). PORC will no longer review reports after 2006.



Plate 12. Parasitic Jaeger (*Stercorarius parasiticus*). This sub-adult was at Presque Isle S.P., *Erie*, 17 July 2005 (Jerry McWilliams).

Red Phalarope (*Phalaropus fulicaria*) (12+)

Bald Knob, *Allegheny*, 4-8 September 2005. (GM (p); et al.; Class I; 331-01-2005). 6/0. Photograph published in PB V19:219 and NAB V60:68. An excellent discovery at this inland location, this bird was probably the result of the passing of Hurricane *Katrina* three days before.



Plate 11. Red Phalarope (*Phalaropus fulicaria*). This bird present at Bald Knob, *Allegheny*, 4-8 September 2005 was an excellent discovery at this inland location (Geoff Malosh) and probably the result of the passing of Hurricane *Katrina* three days before.

Long-tailed Jaeger (*Stercorarius longicaudus*) (4)

An extraordinary sighting at Somerset Lake, *Somerset*, 27 August 2005. (JP (p), RP; Class I; 334-01-2005). 6/1. Photograph published in PB 19: 195. This was a nice example of how the written documentation helped to support the distant photos and clinch the identification. (Payne 2005).

Laughing Gull (*Larus atricilla*) (9+)*

One first-winter at Yellow Creek S.P., *Indiana*, 1 September 2005. (TS (p), et al; Class I; 337-01-2005). 6/0. Photograph published in PB V19:220. Another first-winter at Green Lane Res., *Montgomery*, 1 September 2005. (GF; Class III; 337-02-2005). 6/1. Both birds, from widely scattered areas of the state, were probably the result of the passing of Hurricane *Katrina*. PORC will no longer review reports after 2006.



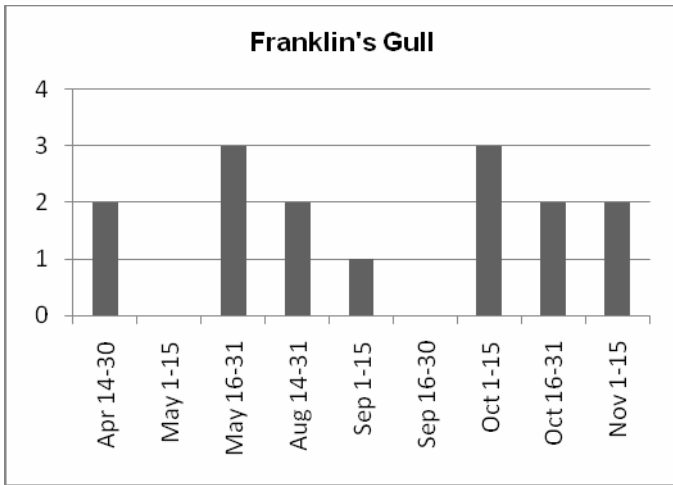
Parasitic/Pomarine Jaeger (*Stercorarius parasiticus/pomarinus*) (17+)*

One at Presque Isle S.P., *Erie*, 8 November 2005. (JMW; Class III; 332a-01-2005). 6/0. One at Presque Isle S.P., *Erie*, 22 November 2005. (JMW; Class III; 332a-02-2005). 6/0. One at Presque Isle S.P., *Erie*, 1 December 2005. (JMW; Class III; 332a-03-2005). 6/0. One at Presque Isle S.P., *Erie*, 24 October 2006. (JMW; Class III; 332a-01-2006). 6/0. One at Fort Hunter, *Dauphin*, 2 September 2006. (CR, DY; Class III; 332a-02-2006). 6/0. The Presque Isle birds were observed at too great a distance to determine specific species and the Fort Hunter bird – a waif from Tropical Storm *Ernesto* was observed too briefly for identification to species. All documentation ruled out Long-tailed Jaeger.

Plate 13. Laughing Gull (*Larus atricilla*). This first-winter at Yellow Creek S.P., *Indiana*, 1 September 2005 (Tom Simmons) was likely the result of the passing of Hurricane *Katrina*.

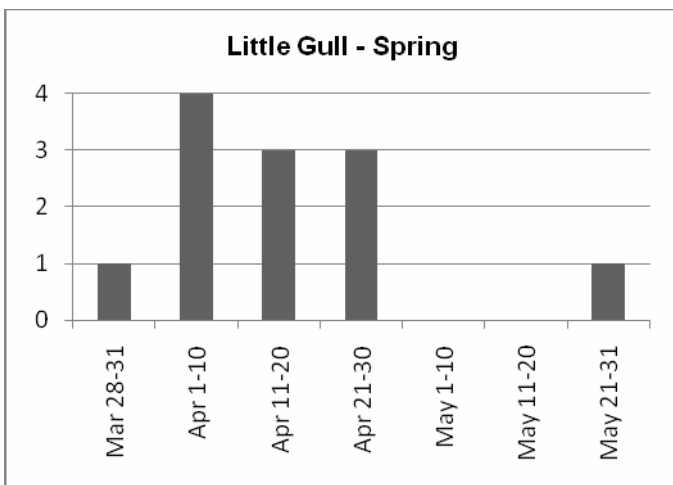
Franklin's Gull (*Larus pipixcan*) (13+)*

One first-winter feeding with Ring-billed Gulls in a field in Buckingham Twp., *Bucks*, 12 November 2005. (AB (p); Class I; 338-01-2005). 7/0. Photograph published in PB V19:220. One in basic plumage at Van Sciver Marsh, *Bucks*, 8 October 2006. (DF (p); Class I; 338-01-2006). 7/0. Photograph published in PB V20:203 and NAB V61:65. PORC will no longer review reports after 2006.



Little Gull (*Larus minutus*) (15+)*

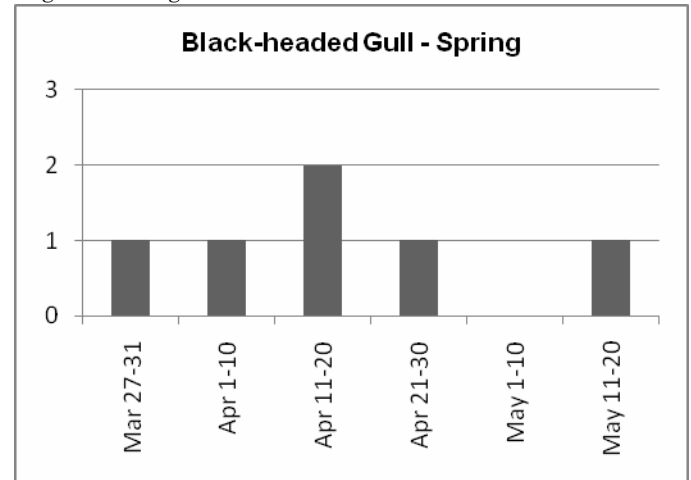
One adult in Falls Twp., *Bucks*, 8 April 2006. (DF; GD (p) et al.; Class I; 339-01-2006). 7/0. Photograph published in PB V20:81. This regularly occurring species will no longer be reviewed after 2006.



Black-headed Gull (*Larus ridibundus*) (17+)

One adult in basic plumage observed feeding with Bonaparte's and Little Gulls on the Susquehanna River near Harrisburg, *Dauphin*, 27 March 2005. (TJ; Class III; 340-01-2005). 6/0. One adult in flight with Bonaparte's Gulls on the Susquehanna River, *Lancaster*, 1 April 2006. (JH; EW, et al.; Class III; 340-01-2006). 7/0. This species

may of regular occurrence at these locations and should be looked for within the large flocks of Bonaparte's Gulls that migrate through here.



California Gull (*Larus californicus*) (6)

One adult on the Susquehanna River at Washington Boro, *Lancaster*, 14 May 2005. (BS; FH (p), EW, et al; Class I; 346-01-2005). 7/0. Photograph published in PB V19:125. One adult at Presque Isle S.P., *Erie*, 20 February 2006. (JMW; Class III; 346-01-2006). 6/1. One adult at Lake Nockamixon, *Bucks*, 23-25 March 2006. (GF (p); GD (p); TFH (p), AM, m.obs.; Class I; 346-02-2006). 7/0. Photograph published in PB V20:81. One adult at Memorial Lake, *Lebanon*, 26 December 2006. (TJ; Class III; 346-03-2006). 6/1. This species may be of a more regular occurrence in the state and observers are now specifically looking for this species where large numbers of gulls occur. The *Bucks*, *Lancaster* and *Lebanon* sightings were respective first-county records.



Plate 14. California Gull (*Larus californicus*). This adult was on the Susquehanna River at Washington Boro, *Lancaster*, 14 May 2005 (Frank Haas), part of a trend of increased sightings within Pennsylvania.

Black-legged Kittiwake (*Rissa tridactyla*) (12+)

One in basic plumaged observed flying by Sunset Point, Presque Isle S.P., *Erie*, during a waterbird count 3 December 2005. (JMW (p); Class I; 357-01-2005). 6/0. Photograph published in PB V20:41 and NAB V60:230.

There are two previous late fall- early winter records from this location.

Sabine's Gull (*Xema sabini*) (17+)

Two immatures flying along the Delaware River, Tincum Twp.; Delaware, 6 September 2006. (AGu; Class III; 360-01-2006). 7/0. These two birds were most likely the result of the passing of Tropical Storm *Ernesto* four days prior. This is a first Delaware record.

Arctic Tern (*Sterna paradisaea*) (6+)

One believed to be either a one year old or possibly a second summer at Peace Valley Park, Bucks, 4 June 2005. (AM, CC, EC, HE; Class III; 369-01-2005). 5/2. 6/1. The age of this bird – an age group that is rare in the northeast – caused some concern within the committee but it was felt the overall description fit this species.

Sooty Tern (*Sterna fuscata*) (10+)

One adult seen in flight along the Susquehanna River at Washington Boro, Lancaster, 24 July 2005. (EW (p); et al.; Class I; 375-01-2005). 7/0. Photograph published in PB V19:220. One juvenile at Washingtonville, Montour, 31 August 2005. (DB, WL, SP; Class III; 375-02-2005). 6/1. One adult seen in the company of Black Terns on the Susquehanna River, Washington Boro, Lancaster, 2 September 2006. (CR (p), DH, BS; et al. Class I; 375-01-2006). 6/0. Photograph published in PB V20:206. The 2005 Lancaster bird could have been attempting to track back to the Atlantic Ocean after being displaced by Hurricane *Dennis* which passed through the Midwest U.S. about a week prior to the sighting. The Montour bird coincides with the passing through the area of the remnants of Hurricane *Katrina* and established a first county record. The 2006 Lancaster bird was found after the passing of Tropical Storm *Ernesto*.

Black Skimmer (*Rynchops niger*) (7+)

One in flight over Williams Twp., Northampton, 9 December 2005. (AK; Class III; 382-01-2005). 6/0. A nice find for this interior locale, probably pushed inland by a strong low-pressure system that moved up the Atlantic coast the previous day and which brought 6.5' of snow to this location.

Eurasian Collared-Dove (*Streptopelia decaocto*) (10)

One in Coatesville, Chester, 10 July - 10 October 2005. (LL; BM (p), NP (p), et al.; Class I; 409a-01-2005). 6/0. Photograph published in PB V19:220. One in flight at Susquehannock S.P., Lancaster, 7 September 2005. (TA; Class III; 409a-02-2005). 7/0. One in Eckville, Berks, 16 April 2006. (DBa; Class III; 409a-01-2006). 7/0. One in Venango Twp., Erie, 13 June 2006. (CR (p); Class I; 409a-03-2006). 7/0. Photograph published in PB V20:146. The Chester location also held as many as four during the observation period with breeding highly suspected but not confirmed. This species has successfully nested in Franklin for the past three years and future sightings in the state are expected. PORC will no longer review reports after 2006.

White-winged Dove (*Zenaida asiatica*) (7)

One in Drumore Twp., Lancaster, 6 April 2005. (TA (p); Class I; 413-01-2005). 6/0. Photograph published in PB V19:126. One in Palmerton, Carbon, 16 May 2005. (RRh (p); Class I; 413-02-2005). 6/0. Photograph published in PB V19:126. One in Upper Makefield Twp., Bucks, 13-20

December 2005. (MR; HE (p), AM, et al.; Class I; 413-03-2005). 7/0. One in New Castle, Lawrence, 17-18 May 2006. The seven records have been from six widely scattered counties suggesting this species can turn up anywhere in the state. The Bucks bird was atypical as all previous records were from spring or early summer.

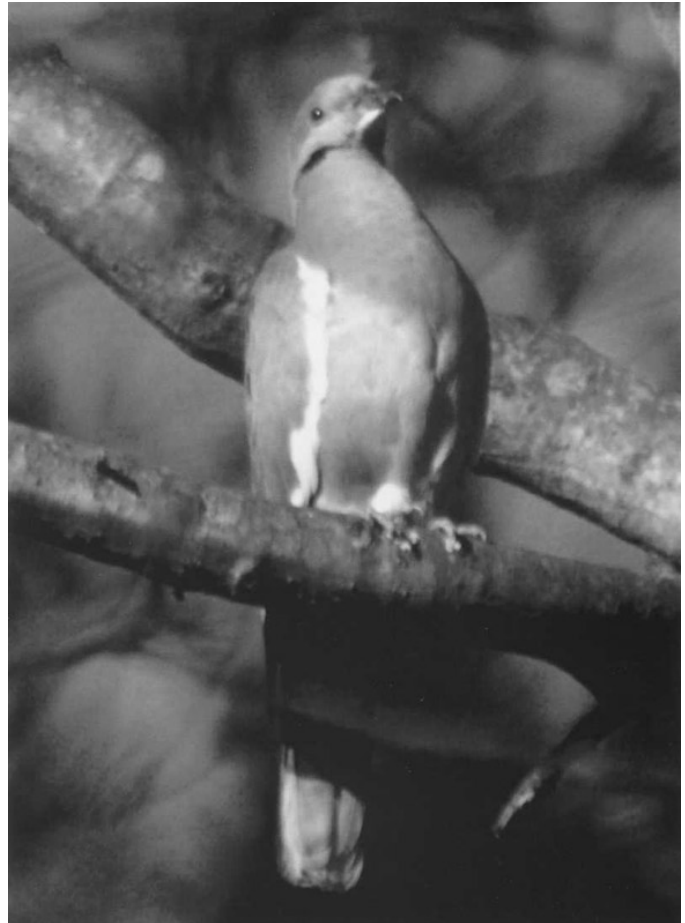


Plate 15. White-winged Dove (*Zenaida asiatica*). There were four records of this species for this report including this bird in Upper Makefield Twp., Bucks, 13-20 December 2005. This individual was atypical in the sense that all previous records were from spring or early summer. Photographed 14 December 2005 (Howard Eskin).

Northern Hawk Owl (*Surnia ulula*) (3+)

One observed near New Greenda, Fulton, 9 October 2006. (DP, JPU, FP, RPy; Class II; 446-01-2006. The Committee was initially suspect of the date especially in a non-invasion year, but the four independent reports described this species well.

Selasphorus species (*Selasphorus*) (7+)

William's Twp., Northampton, 3 September 2005, (AK; Class III; 495a-01-2005). 6/0. The bird was not trapped for positive identification, but the written description was sufficient to accept this bird as a *Selasphorus* species. PORC will no longer review reports after 2006.

Western Kingbird (*Tyrannus verticalis*) (17+)

One in New Jacksonville, Indiana, 28-29 July 2005. (MF, GM (p); Class I; 557-01-2005). 6/0. Photograph published in PB V19:169 and NAB V59:689. One in William's Twp., Northampton, 30 October -6 November 2005. (AK; DD (p), et al.; Class I; 557-02-2005). 6/0. Photograph published in PB

19:221. Photographs of both birds clearly show a black tail with the outer rectrices edged in white. The *Indiana* sighting was a first county record.

Scissor-tailed Flycatcher (*Tyrannus forficatus*) (6+)

One adult at Ligonier, *Westmoreland*, 1 May 2005. (ML (p); et al.; Class I; 561-01-2005). 7/0. Photograph published in PB V19 (2) cover. One adult in Waynesboro, *Franklin*, 20-27 August 2005. (DG, BK, CK (p), et al.; Class I; 561-02-2005). 7/0. Photograph published in PB V19:222.



Plate 16. Scissor-tailed Flycatcher (*Tyrannus forficatus*). This adult was present in Waynesboro, *Franklin*, 20-27 August 2005 photographed here 20 August (Chad Kaufmann).

Fork-tailed Flycatcher (*Tyrannus savanna*) (1)

One juvenile in Morrisville, *Bucks*, 4-7 June 2006. (BK; JFr, GM (p), AM, NP, JWi (p), m.obs.; Class I; 562-01-2006). 7/0. Photograph published in PB V20(3):128 and cover and NAB V60:525. A great find in a small patch of woods along the Delaware River, this cooperative bird provided many with close looks and spectacular photographs. The combination of molt, pale gray back, white collar and yellow in the crown suggested the Mexican subspecies *T. s. monachus*. This is the first confirmed record for Pennsylvania. (Keim 2006). A previous report of a bird collected near Philadelphia in the fall of 1873 and placed in the Princeton Museum cannot be found.



Plate 17. Fork-tailed Flycatcher (*Tyrannus savanna*). This cooperative juvenile thrilled many observers as it fed in a small patch of woods along the Delaware River near Morrisville, *Bucks*, 4-7 June 2006 providing the first documented state record. Photographed here 6 June 2006 (Geoff Malosh).

Cave Swallow (*Petrochelidon fulva*) (8)

Five in flight near the Kinzua Dam, *Warren*, 4 November 2005. (JF; Class III; 576-04-2005). 7/0. Three-four seen in flight over Erie, *Erie*, 9 November 2005. (JMW; Class III; 576-02-2005). 7/0. Five passing Roderick Wildlife Preserve, *Erie*, 13 November 2005. (GM; Class III; 576-01-2005). 6/0. (Malosh 2005). One at the Penn-Warner Tract, *Bucks*, 19 November 2006. (DF (p); Class I; 576-01-2006). 7/0. Photograph published in PB V20:205. The 2005 reports were part of a large flight of this species in the Northeast that season. The *Bucks* bird was the first Cave Swallow documented by a photograph, elevating this species to the Official State List (Pulcinella 2006).

Sedge Wren (*Cistothorus platensis*) (26+)*

One at Martin's Creek, *Northampton*, 26 December 2004 - 20 January 2005. (RW (p); Class I; 625-03-2004). 6/0. Photograph published in PB V19:29. One in Philadelphia, *Philadelphia*, 28-30 June 2005. (Che (a); NP, et al; Class I; 625-01-2005). 6/0. One at Yellow Creek S.P., *Indiana*, 26 August 2005. (CG, MH, RH (p); Class I; 625-02-2005). 6/0. One at Peace Valley Park, *Bucks*, 26-27 September 2005. (AM; DF (p), et al.; Class I; 625-03-2005). 6/0. Photograph published in PB V19:222. One at Peace Valley Park, *Bucks*, 3 October 2005. (BSh; DF (p), AM, et al. Class I; 625-04-2005). 7/0. One at an undisclosed location in *Butler*, 25 June 2005. (TJ (p), CR; Class I; 625-05-2005). 6/0. One in Clintonville, *Venango*, 1-28 July 2006 (CR (p); et al.; Class I; 625-02-2006). 6/0. Photograph published in PB V20:147. One in Greenfield Twp., *Erie*, 9-17 June 2006. (CR; Class III; 625-03-2006). 7/0. One in North Shenango Twp., *Crawford*, 21-26 June 2006. (CR (p), CGe; Class I; 625-04-2006). 7/0. Photograph published in PB V20:146. One at Core Creek, *Bucks*, 9 October 2006. (BK; Class III; 625-05-2006). 6/0. One at Pine Run, *Bucks*, 30 September 2006. (KR; Class III; 625-06-2006). 6/0. Another at Pine Run, *Bucks*, 14 October 2006 (CR, KR; Class III; 625-07-2006). 6/0. One at Peace Valley Park, *Bucks*, 7 October 2006. (KR; RH (p), SK, AM; Class I; 625-08-2006). 6/0. Photograph published in PB V20:205. The *Northampton* bird was the first documented in winter (Wiltraut 2005). PORC will no longer review reports after 2006.

Townsend's Solitaire (*Myadestes townsendi*) (7+)

One at SGL 30, *McKean*, 15 January - 2 April 2005. (LG; BC (p), JF (p), MF (p), GM (p), MM (p), m.obs.; Class I; 650-01-2005). 6/0. Photograph published in PB V19:31 and NAB V59:263. This popular bird was enjoyed by many during its extended stay (Groschek 2005).



Plate 18. Townsend's Solitaire (*Myadestes townsendi*). This popular bird was enjoyed by many during its stay at SGL 30, McKean, 15 January - 2 April 2005. Photographed here 24 January 2005 (Geoff Malosh).

Bicknell's Thrush (*Catharus bicknelli*) (2+)

One along the Conestoga Creek, Lancaster, Lancaster, 21-22 May 2005. (DL (p) (a); Class I; 654a-01-2005). 7/0. Photograph published in PB V19:127. This report was thoroughly with photographs and digital audio leaving no doubt as to the identification.



Plate 19. Bicknell's Thrush (*Catharus bicknelli*). A difficult species to document well, this individual present along the Conestoga Creek, Lancaster, Lancaster, 21-22 May 2005 (Dan Lane) was thoroughly documented with photographs and digital audio leaving no doubt as to the identification.

Redwing (*Turdus iliacus*) (1)

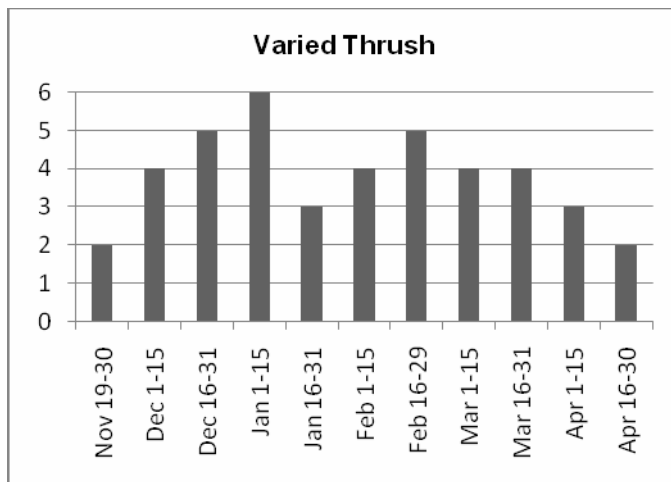
One at Peace Valley Park, Bucks, 5 February 2005. (JH, AM; BE (p), DD (p), DF (p), JF, et al.; Class I; 662-01-2005). 7/0. Photograph published in PB V19: 27-28 and NAB V59:370. An outstanding find by a beginning birder. Word of this sighting spread quickly through the birding community and several were able to enjoy it before sunset. Unfortunately, it remained only for a day much to the disappointment of the estimated 200-300 people who searched the following day. (Mirabella 2005).



Plate 20. Redwing (*Turdus iliacus*). One of the most outstanding finds ever in the state, this individual was observed by several observers during its short four hour stay at Peace Valley Park, Bucks, 5 February 2005 (Devich Farbotnik).

Varied Thrush (*Ixoreus naevius*) (19+)

One at Middle Creek WMA, Lancaster, 21 January – 6 February 2005. (TA (p), m.obs.; Class I; 666-01-2005). 6/0. Photograph published in PB V19:58 and NAB V59:263. One found dead after striking a window in Glen Mills, Delaware, 19 November 2005. (MSt, RC (p); Class I; 666-02-2005). 6/0. Photograph published in PB V19:222 and NAB V60:70. One found dead on a porch in Coffeetown, Lebanon, 29 November 2005. (RF; RM (p); Class I; 666-03-2005). 7/0. One in Boalsburg, Centre, 27 March – 30 April 2006. (AME, FME; WL (p), m.obs.; Class I; 666-01-2006). 7/0. Photograph published in PB V20:82 and NAB V60:372.



Bohemian Waxwing (*Bombycilla garrulus*) (11+)

One seen within a flock of American Robins in Degolia, McKean, 5 March 2005. (JF; Class III; 694-01-2005). 6/0.

Lark Sparrow (*Chondestes grammacus*) (11+)

One adult in Limerick Twp., Montgomery, 19 September 2005 – 4 February 2006. (SG; KC, GF, JMi (v), m.obs.; Class I; 820-02-2005). 7/0. One immature at Presque Isle S.P., Erie, 26 September 2005. (JMW; Class I; 820-01-2005). 6/0. Photograph published in PB V19:222. One adult in Chambersburg, Franklin, 10 January – 6 February 2006. (JB; GM (p), BMo (p), m.obs.; Class I; 820-01-2006). 7/0. Photograph published in PB V20(1) cover and NAB V60:316.

LeConte's Sparrow (*Ammodramus leconteii*) (7)

One at Pine Run, Bucks, 24-27 November 2006. (CR (p), TJ (p); ABi (p), HE (p), DF (p), MLy (p), m.obs.; Class I; 829-01-2006). 6/0. Photograph published in PB V20:206 and NAB V61:67. This cooperative bird provided a first county record.

Nelson's Sharp-tailed Sparrow (*Ammodramus nelsoni*) (13)*

One at Bald Knob, Allegheny, 26 September 2005. (GM; Class III; 830a-01-2005). 6/1. This report fits nicely into narrow fall window of occurrence. PORC will no longer review reports after 2006.

Seaside Sparrow (*Ammodramus maritimus*) (5+)

One in Londonderry, Twp., Dauphin, 25 May 2005. (TJ; KK (p), PR (p), et al.; Class I; 831-01-2005). 6/0. Quick dispersal of the news of this sighting allowed several patient observers to see this exciting find during the course of the day. This was a first county record.



Plate 21. LeConte's Sparrow (*Ammodramus leconteii*). This secretive but cooperative individual was seen by many at Pine Run, Bucks, 24-27 November 2006. (Mike Lynam).

White-crowned (Gambel's) Sparrow (*Zonotrichia leucophrys gambelli*) (7+)

One at Presque Isle S.P., Erie, 4 May 2006. (JMW (p); Class I; 838a-01-2006). 6/0. Photograph published in PBV20:83 and NAB V60:375. This race of the White-crowned Sparrow is probably regular during early May at Presque Isle but overlooked.

Harris's Sparrow (*Zonotrichia querula*) (10+)

One immature at Stone Church, Northampton, 18 January - 20 March 2005. (RW (p); MS (p), et al.; Class I; 839-01-2005). 6/0. Photograph published in PB V19:59 and NAB V59:265. One adult at Willow Bay, McKean, 16-19 May 2005. (AR (p); JF; Class I; 839-02-2005). 6/0. Photograph published in PB V19:128. One adult in Oakland Mills, Juniata, 10 December 2005 - 8 May 2006. (AT; DG (p), DR (p), m. obs.; Class I; 839-03-2005). 7/0. Photograph published in PB V20:43. The Northampton location also hosted an adult in winter 2003-2004.

Dark-eyed (Oregon) Junco (*Junco hyemalis oregonus*) (5+)

One adult male in Tionesta, Forest, 4 February - 2 March 2006. (FMG (p); Class I; 840a-01-2006). 7/0. Photograph published in PB V20:43. One adult male in Allen Twp., Northampton, 23 November 2006. (JFi (p); Class I; 840a-02-2006). 6/0. Photograph published in PB V20:206.

Black-headed Grosbeak (*Pheucticus melanocephalus*) (5+)

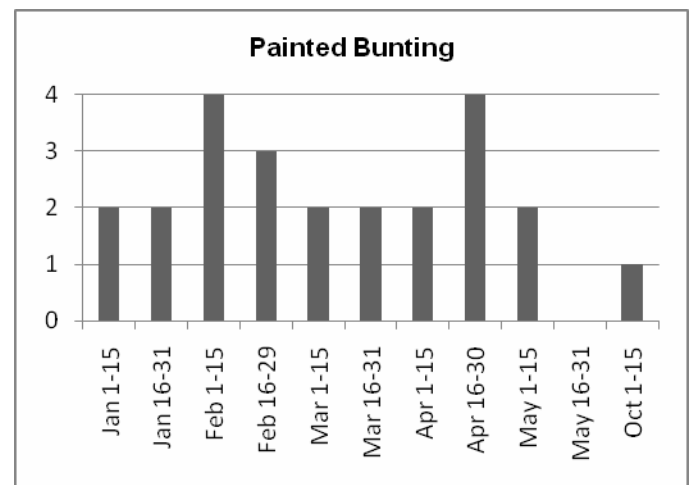
One on Bald Eagle Rd., Lancaster, 15 December 2002. (BH, FH (p); et al.; Class I; 788-01-2002). 7/0. One adult male in Williams Twp., Northampton, 13 May 2006. (AK; Class III; 788-01-2006). 6/1. The Lancaster bird was found on the Southern Lancaster County CBC (Haas 2003).



Plate 22. Harris's Sparrow (*Zonotrichia querula*). This immature was at Stone Church, Northampton, 18 January-20 March 2005 photographed here 18 January (Rick Wiltraut). This same location also hosted an adult in winter 2003-2004.

Painted Bunting (*Passerina ciris*) (13+)

One adult male visited a few feeders in Northampton Twp., Bucks, 6-28 February 2005. (AM, AB (p), et al.; Class I; 794-01-2005). 6/0. Photograph published in PB V 19:59. One female in Muhlenburg Twp., Berks, 21-26 April 2006. (CD (p); et al. Class I; 794-01-2006). 7/0. Photograph published in PB V20:83. One adult male in Nicholson Twp., Wyoming, 13 May 2006. (WR; Class III; 794-02-2006). 7/0.



Yellow-headed Blackbird (*Xanthocephalus xanthocephalus*) (6+)*

One first-year male at Mt. Pleasant Rd., *Lebanon*, 29 September – 2 October 2005. (KL, JL; RM (p), m.obs.; Class I; 859-01-2005). 7/0. One adult male in West Chester, *Chester*, 5 March 2006. (NP (p); SPu; Class I; 859-01-2006). 7/0. Photograph published in PB V20:83. The *Lebanon* bird was a first county record and the *Chester* bird showed up at a backyard feeder with a flock of Common Grackles and Red-winged Blackbirds. PORC will no longer review reports after 2006.

RECORDS NOT ACCEPTED. A number of factors contribute to a report being denied acceptance. It is very rare for a report to not be accepted because the bird was obviously misidentified. More commonly, a report is not accepted because the documentation submitted was incomplete, insufficient or too vague to properly identify the reported occurrence while eliminating all other similar species. The non-acceptance of any report reflects the opinion of the committee that the documentation, as submitted, did not meet the meticulous standards needed for adding the report to the official historical record. If the committee is unsure of a specific report, it prefers to err on the conservative side and not accept a good record rather than endorse a bad one. It is important to note that non-acceptance by no means indicates that PORC or any of its members feel the record did not occur as reported. All records—whether accepted or not—remain on file and can be re-submitted for review if additional material is presented.

Band-rumped Storm-petrel (*Oceanodroma castro*)

One on Van Sciver Lake, *Bucks*, 2-3 September 2006. Class IV-B, 052-01-2006, 0/6. Photograph published in PB V20:200 and NAB V61:14. This bird was part of the fallout from *Tropical Storm Ernesto*. The photos submitted were not sufficient to identify the bird to species. The report would have benefited from accompanying written documentation describing the upperwing pattern, rump pattern, flight style and wing shape. Email discussion regarding the photos alludes to a possible video of this bird, but no video of this sighting was made available to the committee. PORC agreed to accept the reports as a Storm-petrel species.



Plate 23. Storm-Petrel species (*Oceanodroma species*). This bird at Van Sciver Lake, *Bucks*, 2-3 September 2006 was part of the fallout of pelagic birds from *Tropical Storm Ernesto*. Originally submitted as a Band-rumped Storm-petrel (*Oceanodroma castro*) the photos were not sufficient to identify the bird to species and as a result, it was accepted as Storm-petrel species. Photographed here 2 September 2006 (*Gerry Dewaghe*).

Great White Heron (*Ardea herodias occidentalis*)

One at Green Pond, Northampton, 1 September 2005. Class IV-C, 080a-01-2005. The Committee felt the description submitted was probably either a Snowy Egret or immature Little Blue Heron.

Swallow-tailed Kite (*Elanoides forficatus*)

One in Butler, *Butler*, 17 April 2005. Class IV-A, 168-03-2005, 1/5. The Committee agreed that the observation may have been correct, but there was not enough information to adequately assess the report.

Mississippi Kite (*Ictinia mississippiensis*)

One at the Rose Tree Park Hawkwatch, *Delaware*, 10 September 2006. Class IV-A, 171-01-2006, 2/4. This very well could have been a Mississippi Kite but because of the great distance of the sighting “bird barely visible to naked eye” there was not much information regarding plumage details and essentially it was identified by structure/shape. The possibility of White-tailed Kite was not ruled out.

Gyrfalcon (*Falco rusticolis*)

One in flight at Hawk Mountain, *Berks*, 13 December 2003. Class IV-A, 200-01-2003, 5/2, 5/2. Committee members were confused by some details submitted that could not be confirmed in references.

Hudsonian Godwit (*Limosa haemastica*)

One at the John Heinz N.W.R., *Philadelphia*, 22 September 2005. Class IV-A, 293-02-2005, 5/2, 4/3. This is a case where written documentation accompanying the not-so-clear photos would have aided the decision making process. The report is probably of this species, but, no photograph or written description of the underwing linings was available to rule out Black-tailed Godwit, however remote that possibility is.

Parasitic Jaeger (*Stercorarius parasiticus*)

One at Presque Isle S.P., *Erie*, 10 October 2004. Class IV-A, 333-01-2004, 5/2, 5/2. The Committee felt that this was most likely a Parasitic Jaeger, but, because of the significant distance involved in the sighting contributing to the inability of observing any notable field marks, it had some difficulty accepting the record primarily on “jizz”.

Eurasian Collared-Dove (*Streptopelia decaocto*)

One seen briefly in flight only in Elephant, *Bucks*, 7 August 2006. Class IV-A, 409a-04-2006, 3/4. Although probably correct, the majority felt that did not feel that Ringed Turtle-Dove was adequately eliminated.

American Three-toed Woodpecker (*Picoides tridactylus*)

One in Chalk Hill, *Fayette*, 6 July 2006. Class IV-C, 520-01-2006, 1/5. The Committee found several discrepancies in the written documentation that would suggest that this bird was a juvenile Hairy Woodpecker with yellow on the crown. Variant juvenile Hairy Woodpeckers can show yellow on the crown (Kauffman 1993). The members also did not feel comfortable that the report was written six months after the sighting.

Violet-green Swallow (*Tachycineta thalassina*)

Three juveniles near the Marietta Boat Club, *Lancaster*, 6 April 2005. Class IV-C, 571-01-2005. 3/4. The committee felt that the description submitted did not sufficiently rule out

one of the expected common swallow species especially Northern Rough-winged Swallow.

Cave Swallow (*Petrochelidon fulva*)

One at Colyer Lake, *Centre*, 17 November 2005. Class IV-A, 576-03-2005. 4/3, 5/2. After two rounds of voting, the committee felt the report was probably correct given the date and the recent incursion of this species into the northeast, but the description lacked mention of the forehead and auricular color and did not rule out a first-year Cliff Swallow.

Sedge Wren (*Cistothorus platensis*)

One in Bell Twp., *Westmoreland*, 26-28 August 2004. Class IV-A, 625-02-2004. 4/3, 3/4. The committee felt the identification may have been correct but that the description of the song – only fleeting glimpses of the bird were obtained - was not indicative of Sedge Wren.

LeConte's Sparrow (*Ammodramus leconteii*)

One in Gap, *Lancaster*, 18-19 November Class IV-A, 829-01-2005. 3/4. The majority felt the report may be correct but the written documentation failed to effectively describe the bird and similar species were not adequately eliminated.

Contributors:

Tom Amico, David Barber (DBa), Adrian Binns (ABi), Joan Bowen, Alan Brady, Dan Brauning, Ken Byerly, Dick Byers, Fred Capenos, Lou Carpenter, Chuck Chalfant (CCh), Richard Clark, Ben Coulter, Kevin Crilley, Chuck Crunkleton, Elaine Crunkleton, Dave DeReamus, Gerry Dewaghe, Tom Dick, Carolyn Drasher, Howard Eskin, Bill Etter, Devich Farbotnik, John Fedak, Mike Fialkovich, Jim Figlar (JFi), Randy Flowers, George Franchois, John Freiberg (JFr), Carl Garner, Dale Gearhart, Chuck Gehringer (CGe), Len Groshek, Aleta Grubish, Steve Grunwald, Al Guarente (AGu), Carol Guba, Myra Halderman, Barbara Haas, Frank Haas, Jonathan Heller (JHe), Paul Hess, Chuck Hetzel (CHe), Margaret Higbee, Roger Higbee, Carol Hildebrand, Charles Hildebrand (ChH), Hank Hox, Jessica Huff, Thomas Ford-Hutchinson, Rob Hynson (RH), Steve Kacir, Chad Kaufman, Bob Keener, Bill Keim (BK), Rudy Keller, Arlene Koch, Karl Kugle, Sheryl Johnson, Tom Johnson, Dan Lane, Mike Lanzone, Wayne Laubscher, Lee Levensgood (LL), Jane Light, Larry Lewis, Ken Light, Mike Lynam (MLy), Alan MacEachren (AME), Fran MacEachren (FME), Geoff Malosh, Mark McConaughy, Flo McGuire (FMG), Jerry McWilliams (JMW), Jason Miller (JMi), Jeff Michaels, Randy Miller, August Mirabella, Bob Moul (BMo), Kirk Moulton, Lois Moulton, Bill Murphy, Patrick O'Donnell, Jeff Payne, Retta Payne, Steve Pinkerton, Mary Beth Pizza, Connie Price, Chris Pugliese, Nick Pulcinella, Sharon Pulcinella (SPu), Delores Purnell, James Purnell (JPu), Florence Pyle, Robert Pyle (RPy), Tom Raub, Regina Reeder, Rich Rehrig (RRh), William Reid, Ken Reiker, Peter Robinson, Megan Rusnak, Al Rutter, Dale Salada, Michael Schall, Jeffrey Schmoyer, Susan Schmoyer, Leon Schreffler, Bob Schutsky, Bob Shaffer (BSh), Tom Simmons, Richard Smith, Vicky Smith, Martha Stephens (MSt), Aden Troyer, Mark Vass, Mike Weible, John West, Bruce Williams, James Williams (JWi), Rick Wiltraut, Eric Witmer, Dave Yeany.

Acknowledgements

Earlier drafts of this report were reviewed and improved by Al Guarente and Eric Witmer.

Literature Cited

- American Ornithologists' Union (AOU). 1998. *Check-list of North American Birds, 7th ed.* Allen Press, Lawrence, KS.
- Chalfant, Chuck. 2006. Anhinga Church Farm School Pond, Exton, Chester County. *Pennsylvania Birds* 20:64:65
- Dittman, D. and G. W. Lasley. 1992. How to document rare birds. *Birding* 24:145-159.
- Groschek, L. 2005. Townsend's Solitaire McKean County. *Pennsylvania Birds* 19:31
- Haas, F. 2003. Black-headed Grosbeak, Lancaster County. *Pennsylvania Birds* 17:36.
- Kaufman, K. 1993. Identifying the Hairy Woodpecker. *American Birds* 47:311-314.
- Keim, B. 2006. A Fork-tailed Flycatcher in Pennsylvania. *Pennsylvania Birds* 20:128-129.
- Malosh, G. 2005. Cave Swallow (*Petrochelidon fulva*) at Roderick Wildlife Reserve, Erie County, PA, 13-Nov-2005. *Pennsylvania Birds* 19:194-195.
- McWilliams, J. 2005. Parasitic Jaeger, Presque Isle State Park, Erie County. *Pennsylvania Birds* 19: 157-158.
- McWilliams, J. 2005a. Long-billed Curlew, Erie County. *Pennsylvania Birds* 19:196.
- McWilliams, J. 2006. "Lesser" Sandhill Crane (*Grus Canadensis Canadensis*) Erie County. *Pennsylvania Birds* 20:6.
- Mirabella, A. 2005. First Pennsylvania Record of Redwing (*Turdus Iliacus*) Bucks County. *Pennsylvania Birds* 20: 27-28.
- Payne, J. and R. Payne 2005. Long-tailed Jaeger, Somerset County. *Pennsylvania Birds* 19:195.
- Pennsylvania Ornithological Records Committee. 2000. Documenting rare birds: what the Records Committee needs. *Pennsylvania Birds* 14:98-99.
- Pulcinella, N. 2006. Official List of the Birds of Pennsylvania. *Pennsylvania Birds* 20:184-189.
- Wiltraut, R. 2005. First Record of Sedge Wren Wintering in Pennsylvania. *Pennsylvania Birds* 19:29.